

Customer

Supplier

Company name
Editor
Phone number
E-mail

Fields of Application

Water supply systems.
Booster sets in high rise buildings and industry.
Water treatment.
Industrial washdown systems.
Fire extinguishing plants.
Boiler feed and condensate transfer.
Sanitary and cleaning installations.
For industrial applications and public services.
Water distribution services.
Industrial applications.
Shipbuilding, mining, power stations, filter units.
Irrigation plants.
Central heating systems.



Design Specification

The OMK Pump is a horizontal axis, radially split, ring section design multistage centrifugal pump of non-self priming type.

Impellers are between bearings, single entry, closed type and dynamically balanced. Impeller diameter will be corrected for optimal adherence to the required duty point.

The axial thrust is relieved by relieving boreholes in each impeller. The remaining thrust can be borne by large-sized bearings.

Pumps with exchangeable wear rings are available upon request.

The pump series consists of 5 sizes. OMK 32, 40, 50, 65 and 80. Stages are from 2 up to max. 14 stages.

Pump and motor are fitted on a common base plate and connected to each other via flexible coupling.

Normally, discharge part is at motor side on top, suction part is at dead end side on the right and rotation of direction is clockwise when viewed from driver.

Suction and discharge nozzles may be a choice of three 90° positions. By special request, it is possible to put the suction nozzle at the motor side. In this arrangement pump and motor rotation must be counter clockwise.

Technical Data

Suction Flanges	: DN50 - DN125 (PN25)
Discharge Flanges	: DN32 - DN80 (PN40)
Operating Pressure	: 40 bar
Flow Range	: 5 - 220 m ³ /h
Head Range	: 30 - 400 m
Temperature Range	: Up to 140 °C
Speed Range	: 1450 - 3600 rpm

Customer
Supplier

Company name
Editor
Phone number
E-mail

Operating data specification

Pumped fluid	Water		Rated flow	50	m ³ /h
Solids			Rated head	150	m
Kind			Geodetic head	0	m
Percentage of solid content	0		Available system NPSH		m
pH value			Inlet pressure (pin)	0	kPa
Temperature	20	°C	Altitude above sea level	100	m
Density	998.3	kg/m ³	Max. operating pressure	1650	kPa
Kin. viscosity	1.005	mm ² /s	Max. diff. pressure	1650	kPa
Vapour pressure	2.34	kPa			

Pump

Make	MAS DAF		Impeller type		
Pump type	OMK 50/ 3		Impeller construction		
Frame size			Impeller Ø		
Design			Max.	190	mm
Self priming	<input checked="" type="checkbox"/> No		designed	190	mm
Speed	2945	rpm	Min.	155	mm
Stages	3		Flow		
Suction port			Nominal	58.5	m ³ /h
Pressure rating	PN25		Max.	68.9	m ³ /h
Nominal pipe size	DN80		Min.	0	m ³ /h
Standard	DIN		Head		
Discharge port			Nominal	137	m
Pressure rating	PN40		Min.	124	m
Nominal pipe size	DN50		Max.	169	m
Standard	DIN		Shut off head	169	m
Shaft power	28.5	kW	NPSH3	3.13	m
Shaft power P2(Q=max.)	33.8	kW	Efficiency	69.3	%

Motor

Make/Type	30 KW-2900 RPM / 200L	
Specific design	IE3 / 50 Hz / Pole pairs 1	
Rated power	30	kW
Electric voltage	3~ 400	V
Speed	2970	rpm
Electric current	52	A
Frame size	200L	
Degree of protection	IP 55	
Type of protection		
Explosion protection		

Coupling

Make/Type	
Series	
Spacer length	mm
Frame size	

Materials

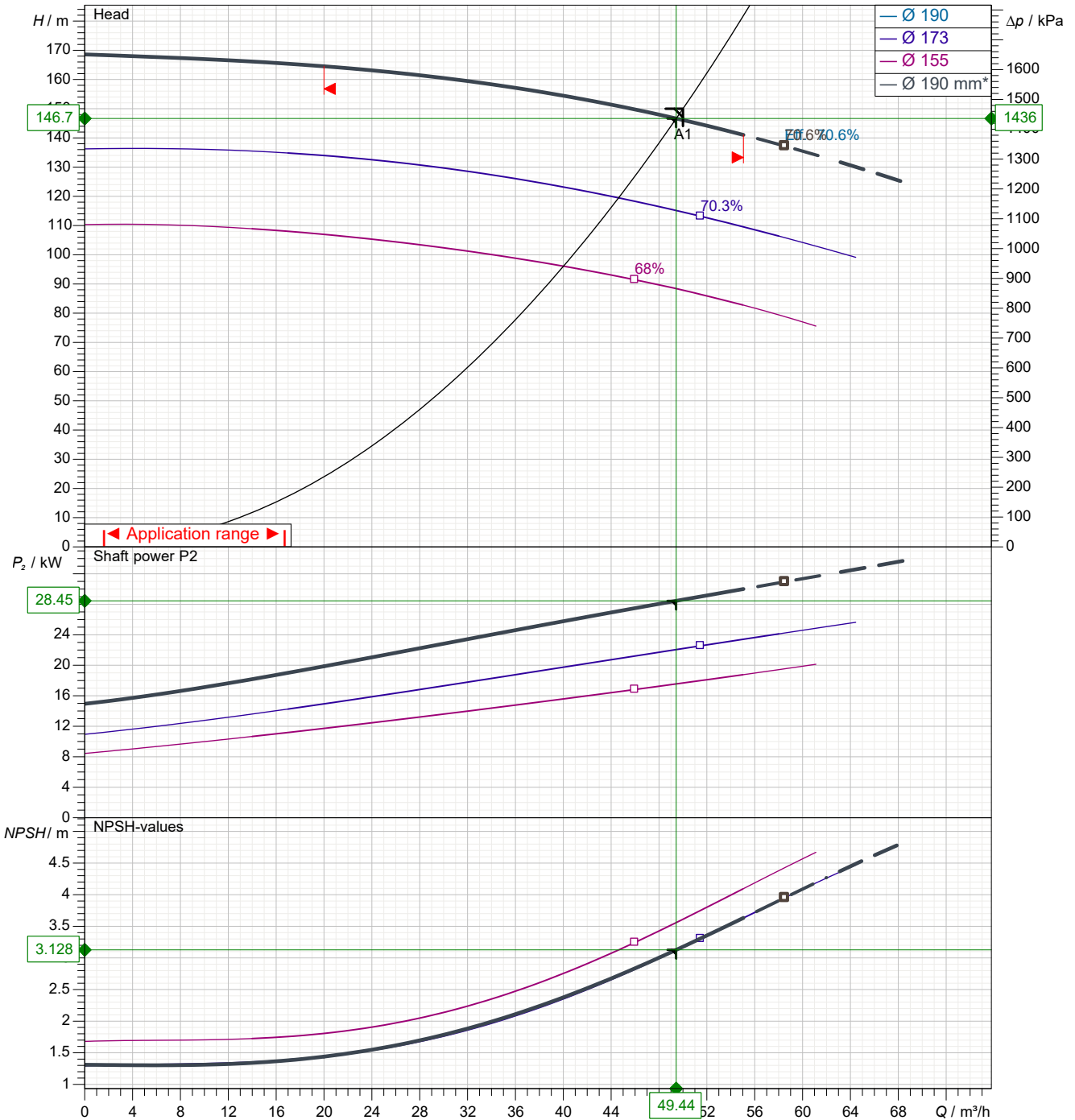
Pump		Shaft seal	Soft Packing
Pump Casing	GJL-250 (GG25)	Material code	
Impeller	GJL-250 (GG25)		
Shaft	A 276 Type 420 (X20Cr13)		
Bearing Housing	GJL-250 (GG25)		

Customer

Supplier

Company name
Editor
Phone number
E-mail

Power data referred to: Water; 20°C; 998.3kg/m³; 1.005mm²/s Sense of rotation Clockwise from the drive end



Pump curves in accordance with ISO 9906 2B

Pumped fluid	Water		Rated flow	50	m ³ /h
Temperature	20	°C	Rated head	150	m
Density	998.3	kg/m ³	Shaft power	28.5	kW
Kin. viscosity	1.005	mm ² /s	Speed	2945	rpm
Vapour pressure	2.34	kPa	NPSH3	3.13	m
Impeller \varnothing	190	mm	Efficiency	69.3	%

Subject to change

Projec

Issue date
2023-07-29

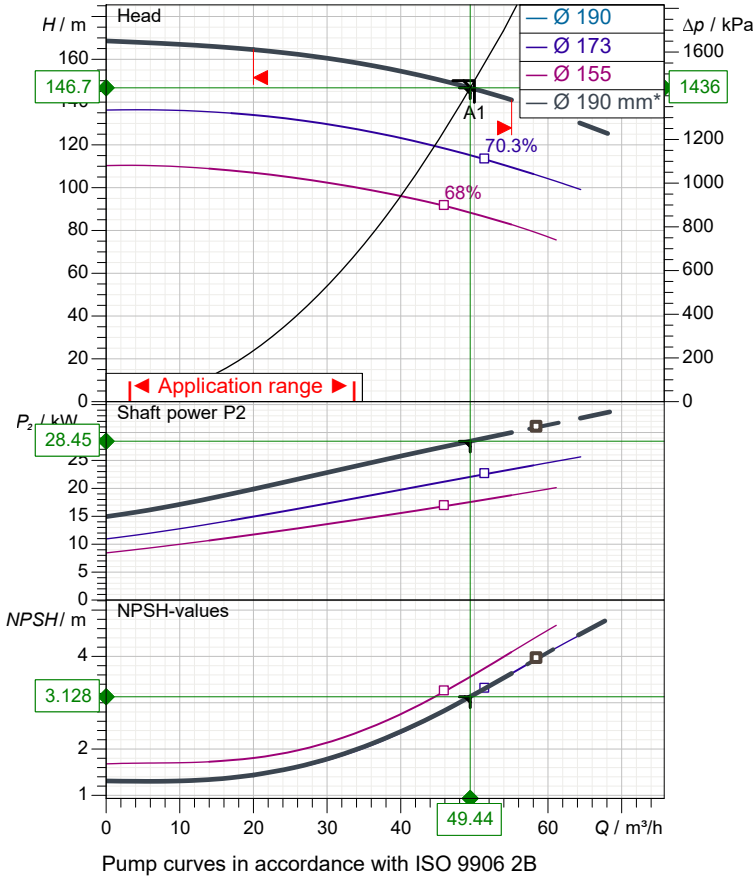
Last update
2023-07-29

Customer

Supplier

Company name
Editor
Phone number
E-mail

Performance curves



Pump

Make	MAS DAF
Pump type	OMK 50/ 3
Design	
Suction port	
Pressure rating	PN25
Nominal pipe size	DN80
Standard	DIN
Discharge port	
Pressure rating	PN40
Nominal pipe size	DN50
Standard	DIN

Operating data specification

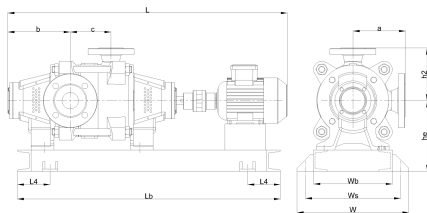
Pumped fluid	Water	
Temperature	20	°C
Density	998.3	kg/m ³
Kin. viscosity	1.005	mm ² /s
Vapour pressure	2.34	kPa
Rated flow	50	m ³ /h
Rated head	150	m
Shaft power	28.5	kW
Speed	2945	rpm
NPSH3	3.13	m
Efficiency	69.3	%
Impeller Ø	190	mm

Motor

Make/Type	30 KW-2900 RPM / 200L
Specific design	IE3 / 50 Hz / Pole pairs 1
Rated power	30 kW
Speed	2970 rpm
Electric voltage	3~ 400 V
Electric current	52 A
Degree of protection	IP 55

Materials

Shaft seal	Soft Packing
Material code	



Dimensions

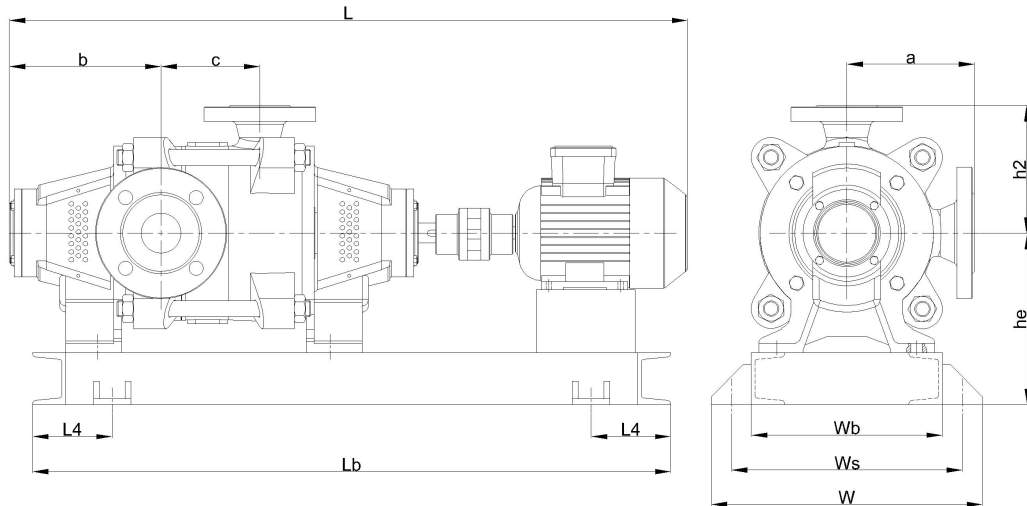
	mm
a	210
b	223
c	266
h2	210
he	300
L	1577
L4	200
Lb	1450
w	520
wb	420
ws	470

Pump Casing	GJL-250 (GG25)
Impeller	GJL-250 (GG25)
Shaft	A 276 Type 420 (X20Cr13)
Bearing Housing	GJL-250 (GG25)

Customer

Supplier

Company name
Editor
Phone number
E-mail



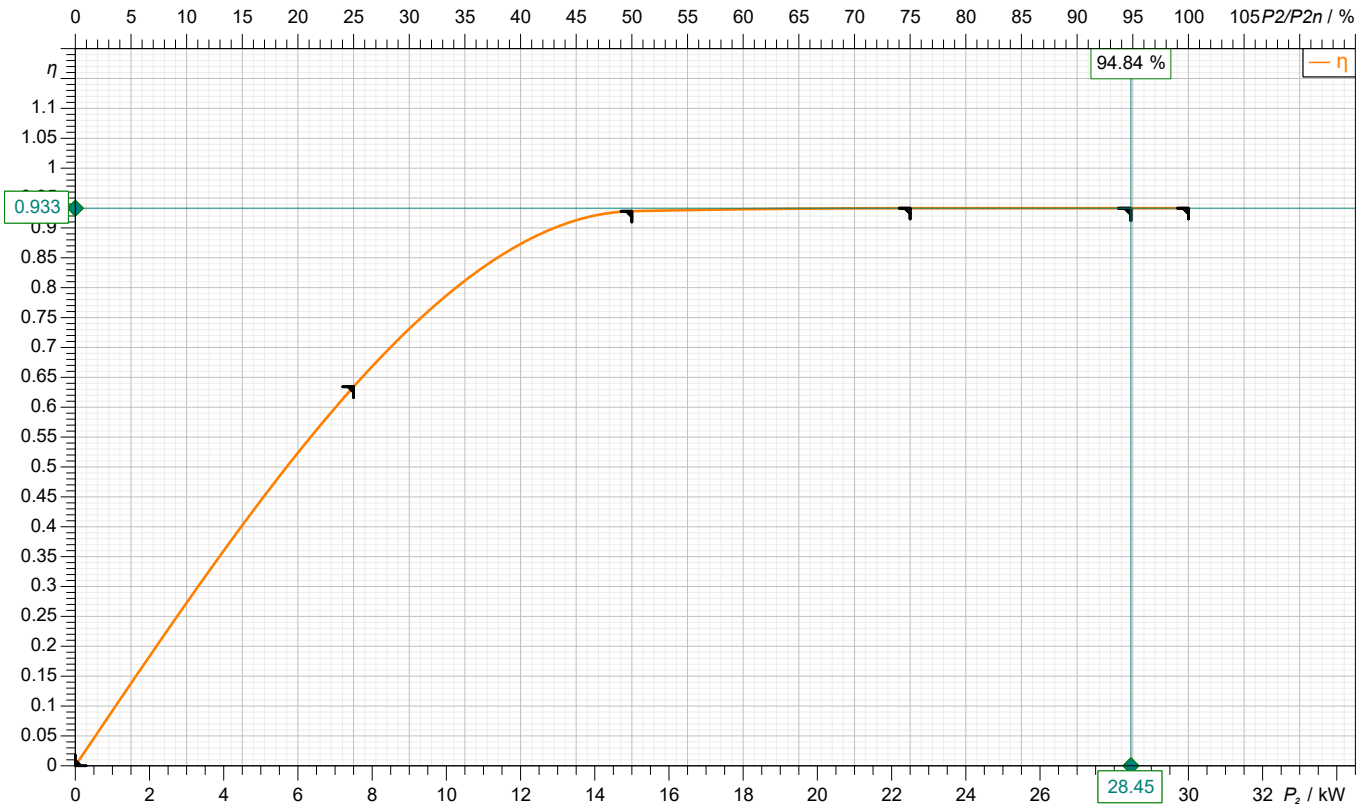
Dimensions	mm	Inlet / outlet	
a	210	Suction port	Discharge port
b	223	DN80	DN50
c	266	PN25	PN40
h2	210		
he	300		
L	1577		
L4	200		
Lb	1450		
w	520		
wb	420		
ws	470		

Customer

Supplier

Company name
Editor
Phone number
E-mail

motor data



Symbol	No load	25 %	50 %	75 %	100 %	125 %
P_2 / kW	0	7.5	15	22.5	30	
P_1 / kW		11.82	16.16	24.12	32.15	
η / %	0	63.43	92.8	93.3	93.3	

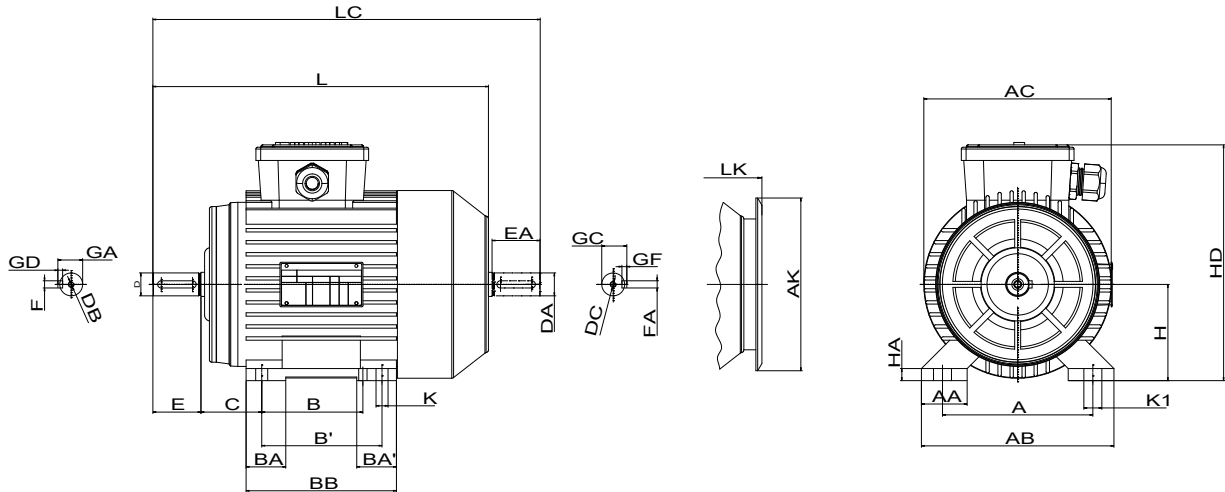
Motor

Make/Type	30 KW-2900 RPM / 200L	Degree of protection	IP 55
Specific design	IE3 / 50 Hz / Pole pairs 1	Type of protection	
Rated power	30 kW	Explosion protection	
Electric voltage	3~ 400 V	Service factor	1.15
Number of poles	2	Starting current	
Speed	2970 rpm	Starting torque	
Electric current	52 A	Moment of inertia	
Power factor	0.89	No. starts per hour	
Frame size	200L	Rated torque	96.5 Nm
Efficiency class	IE3	Insulation class	F (155C°)

Customer

Supplier

Company name
Editor
Phone number
E-mail

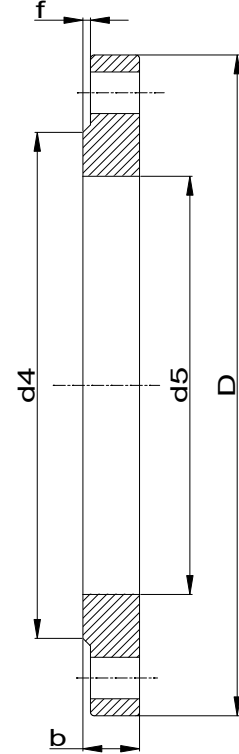
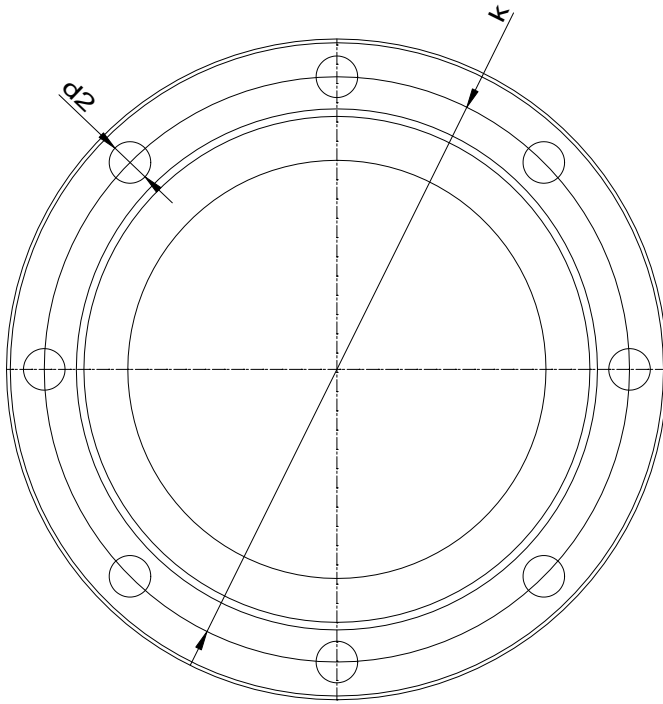


Dimensions	mm		
A	318	E	110
AA	80	EA	110
AB	396	FxGF	16X10
AC	390	FxD	16X10
AK	370	GA	59
B	305	GC	59
B'	-	H	200
BA	68	HA	26
BA'	-	HD	477
BB	355	K	19
C	133	L	747
D	55	LC	865
DA	55	LK	803
DB	M20		
DC	M20		

Customer

Supplier

Company name
Editor
Phone number
E-mail



Suction connection

DN80
PN25

Discharge connection

DN50
PN40

Dimensions	mm
b	24
D	200
d2	18
d4	138
d5	90.5
DN	80
f	2
k	160
n	8

Dimensions	mm
b	20
D	165
d2	18
d4	102
d5	61.5
DN	50
f	2
k	125
n	4



Spare part list
OMK 50/ 3

Revision number

Page
9

Company name
Editor
Phone number
E-mail

Customer

Supplier

Subject to change

Projec

Issue date
2023-07-29

Last update
2023-07-29



Spare part list
OMK 50/ 3

Revision number

Page
10

Company name
Editor
Phone number
E-mail

Customer

Supplier

Subject to change

Projec

Issue date
2023-07-29

Last update
2023-07-29