

**Customer**

**Supplier**

Company name  
Editor  
Phone number  
E-mail

**Fields of Application**

Water supply systems.  
Booster sets in high rise buildings and industry.  
Water treatment.  
Industrial washdown systems.  
Fire extinguishing plants.  
Boiler feed and condensate transfer.  
Sanitary and cleaning installations.  
For industrial applications and public services.  
Water distribution services.  
Industrial applications.  
Shipbuilding, mining, power stations, filter units.  
Irrigation plants.  
Central heating systems.



**Design Specification**

The OMK Pump is a horizontal axis, radially split, ring section design multistage centrifugal pump of non-self priming type.

Impellers are between bearings, single entry, closed type and dynamically balanced. Impeller diameter will be corrected for optimal adherence to the required duty point.

The axial thrust is relieved by relieving boreholes in each impeller. The remaining thrust can be borne by large-sized bearings.

Pumps with exchangeable wear rings are available upon request.

The pump series consists of 5 sizes. OMK 32, 40, 50, 65 and 80. Stages are from 2 up to max. 14 stages.

Pump and motor are fitted on a common base plate and connected to each other via flexible coupling.

Normally, discharge part is at motor side on top, suction part is at dead end side on the right and rotation of direction is clockwise when viewed from driver.

Suction and discharge nozzles may be a choice of three 90° positions. By special request, it is possible to put the suction nozzle at the motor side. In this arrangement pump and motor rotation must be counter clockwise.

**Technical Data**

Suction Flanges	: DN50 - DN125 (PN25)
Discharge Flanges	: DN32 - DN80 (PN40)
Operating Pressure	: 40 bar
Flow Range	: 5 - 220 m <sup>3</sup> /h
Head Range	: 30 - 400 m
Temperature Range	: Up to 140 °C
Speed Range	: 1450 - 3600 rpm

**Customer**
**Supplier**

Company name  
Editor  
Phone number  
E-mail

**Operating data specification**

Pumped fluid	Water	Rated flow	60	m <sup>3</sup> /h
Solids		Rated head	100	m
Kind		Geodetic head	0	m
Percentage of solid content	0	Available system NPSH		m
pH value		Inlet pressure (pin)	0	kPa
Temperature	20	Altitude above sea level	100	m
Density	998.3	Max. operating pressure	1150	kPa
Kin. viscosity	1.005	Max. diff. pressure	1150	kPa
Vapour pressure	2.34			

**Pump**

Make	MAS DAF	Impeller type		
Pump type	OMK 65/ 2	Impeller construction		
Frame size		Impeller Ø		
Design		Max.	215	mm
Self priming	<input checked="" type="checkbox"/> No	designed	197	mm
Speed	2940	rpm	175	mm
Stages	2	Flow		
Suction port		Nominal	71.9	m <sup>3</sup> /h
Pressure rating	PN25	Max.	100	m <sup>3</sup> /h
Nominal pipe size	DN100	Min.	0	m <sup>3</sup> /h
Standard	DIN	Head		
Discharge port		Nominal	91.2	m
Pressure rating	PN40	Min.	64.5	m
Nominal pipe size	DN65	Max.	118	m
Standard	DIN	Shut off head	118	m
Shaft power	24.4	kW	NPSH3	1.91
Shaft power P2(Q=max.)	29.4	kW	Efficiency	66.8
				%

**Motor**

Make/Type	30 KW-2900 RPM / 200L
Specific design	IE3 / 50 Hz / Pole pairs 1
Rated power	30 kW
Electric voltage	3~ 400 V
Speed	2970 rpm
Electric current	52 A
Frame size	200L
Degree of protection	IP 55
Type of protection	
Explosion protection	

**Coupling**

Make/Type	
Series	
Spacer length	mm
Frame size	

**Materials**

Pump		Shaft seal	Soft Packing
Pump Casing	GJL-250 (GG25)	Material code	
Impeller	GJL-250 (GG25)		
Shaft	A 276 Type 420 (X20Cr13)		
Bearing Housing	GJL-250 (GG25)		

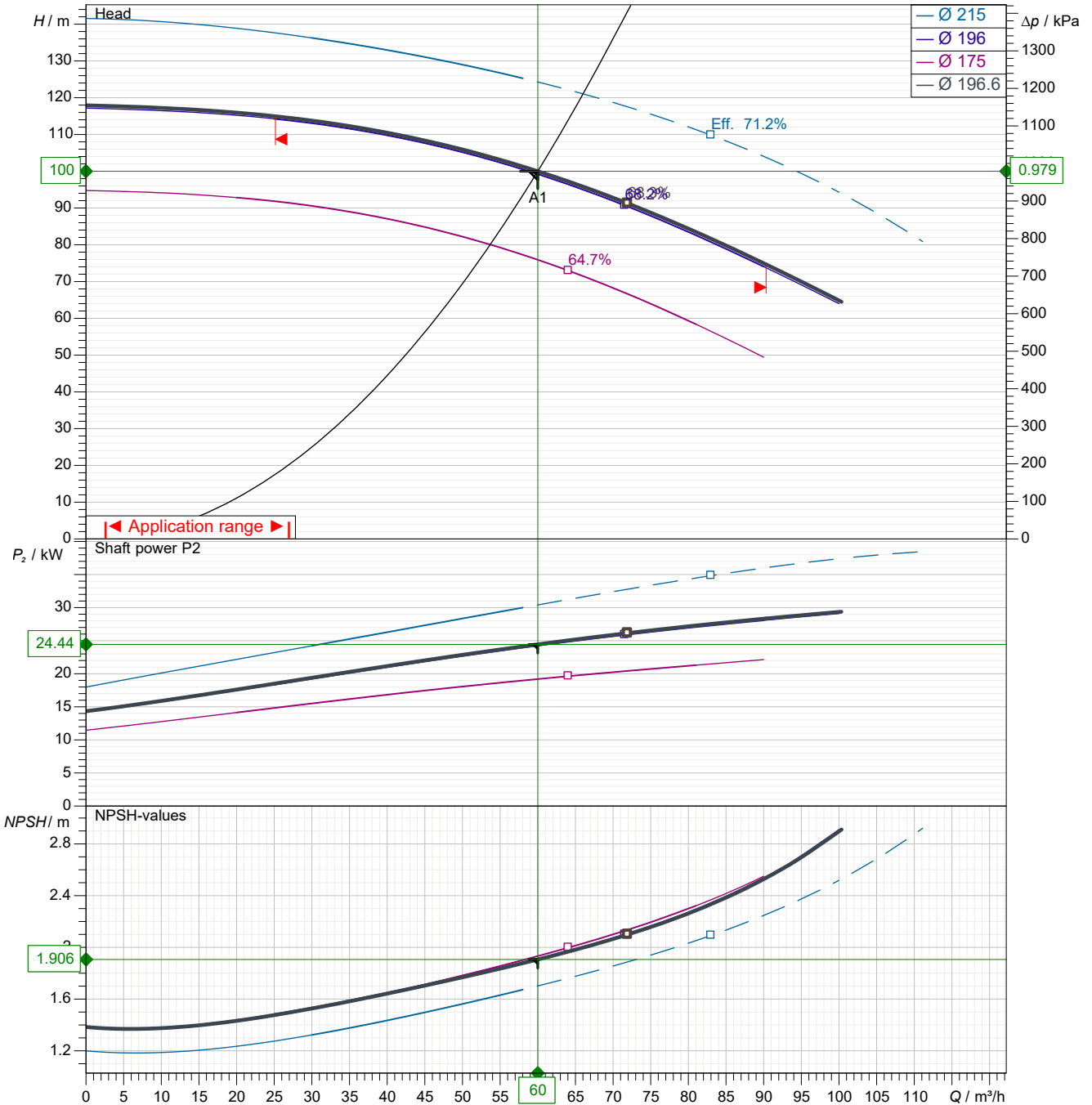
Customer

Supplier

Company name  
Editor  
Phone number  
E-mail

Power data referred to: Water; 20°C; 998.3kg/m<sup>3</sup>; 1.005mm<sup>2</sup>/s Sense of rotation Clockwise from the drive end

Missing or invalid parameter (REFDIAM)



Pump curves in accordance with ISO 9906 2B

Pumped fluid	Water		Rated flow	60	m <sup>3</sup> /h
Temperature	20	°C	Rated head	100	m
Density	998.3	kg/m <sup>3</sup>	Shaft power	24.4	kW
Kin. viscosity	1.005	mm <sup>2</sup> /s	Speed	2940	rpm
Vapour pressure	2.34	kPa	NPSH3	1.91	m
Impeller Ø	197	mm	Efficiency	66.8	%

Subject to change

Projec

Issue date  
2022-08-08

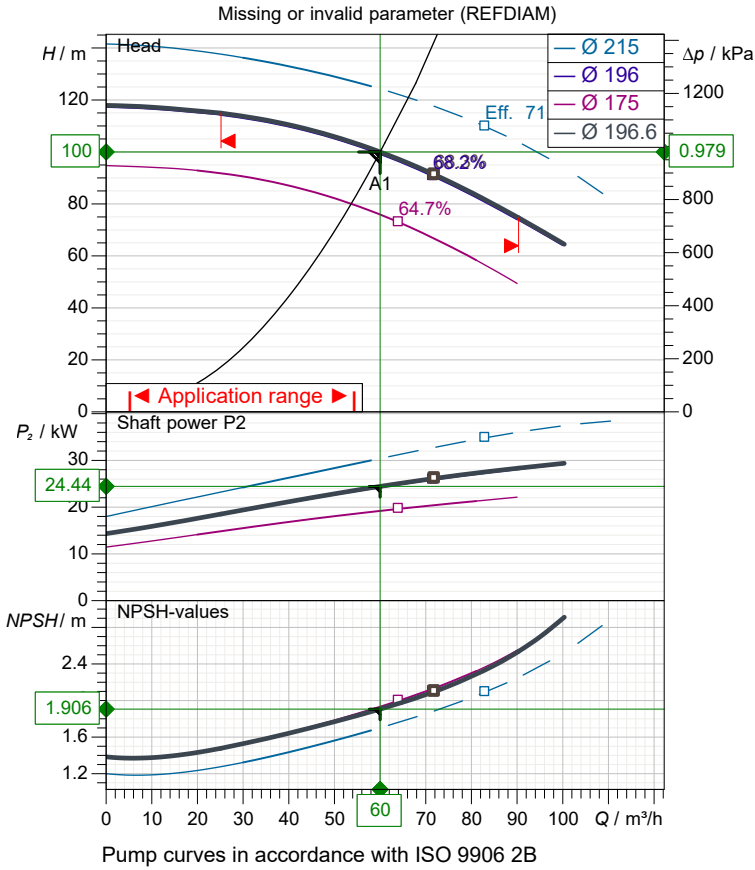
Last update  
2022-08-08

Customer

Supplier

Company name  
Editor  
Phone number  
E-mail

**Performance curves**



**Pump**

Make MAS DAF  
 Pump type OMK 65/ 2  
 Design  
 Suction port  
 Pressure rating PN25  
 Nominal pipe size DN100  
 Standard DIN  
 Discharge port  
 Pressure rating PN40  
 Nominal pipe size DN65  
 Standard DIN

**Operating data specification**

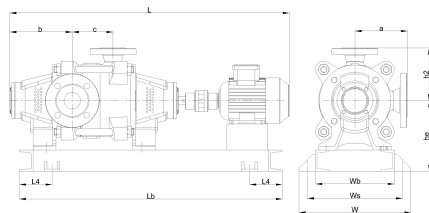
Pumped fluid Water  
 Temperature 20 °C  
 Density 998.3 kg/m<sup>3</sup>  
 Kin. viscosity 1.005 mm<sup>2</sup>/s  
 Vapour pressure 2.34 kPa  
 Rated flow 60 m<sup>3</sup>/h  
 Rated head 100 m  
 Shaft power 24.4 kW  
 Speed 2940 rpm  
 NPSH3 1.91 m  
 Efficiency 66.8 %  
 Impeller Ø 197 mm

**Motor**

Make/Type 30 KW-2900 RPM / 200L  
 Specific design IE3 / 50 Hz / Pole pairs 1  
 Rated power 30 kW  
 Speed 2970 rpm  
 Electric voltage 3~ 400 V  
 Electric current 52 A  
 Degree of protection IP 55

**Materials**

Shaft seal Soft Packing  
 Material code



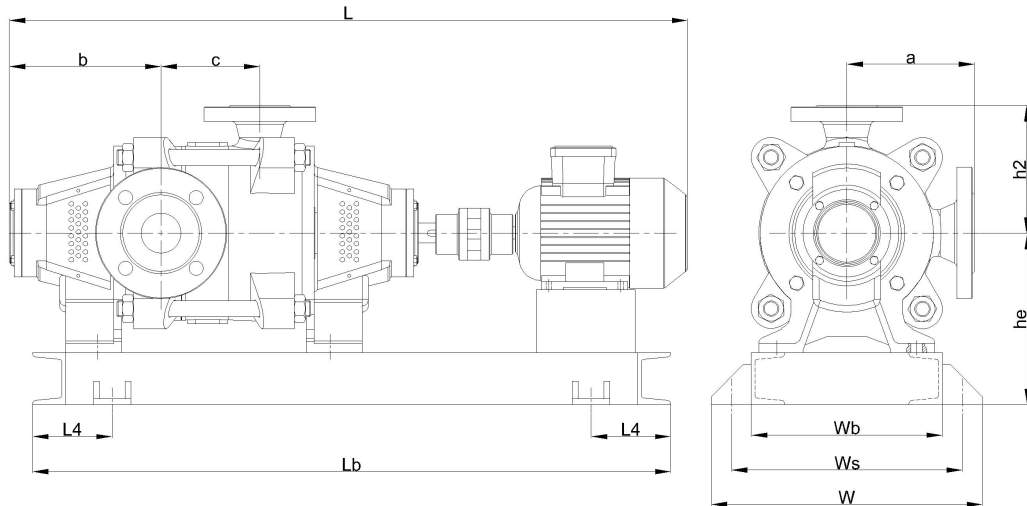
Dimensions	mm
a	240
b	232
c	193
h2	240
he	300
L	1528
L4	200
Lb	1400
w	520
wb	420
ws	470

Pump Casing	GJL-250 (GG25)
Impeller	GJL-250 (GG25)
Shaft	A 276 Type 420 (X20Cr13)
Bearing Housing	GJL-250 (GG25)

Customer

Supplier

Company name  
Editor  
Phone number  
E-mail



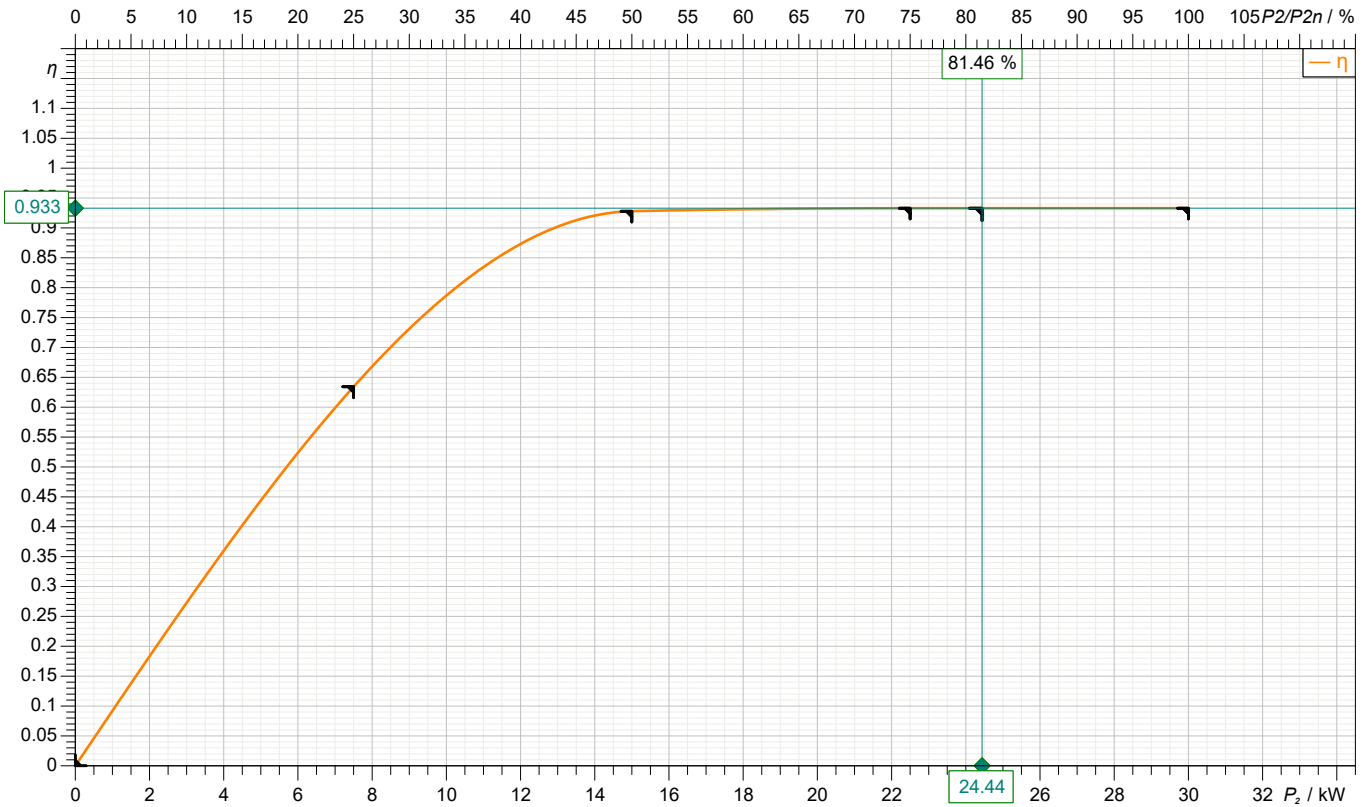
Dimensions	mm	Inlet / outlet	
a	240	Suction port	Discharge port
b	232	DN100	DN65
c	193	PN25	PN40
h2	240		
he	300		
L	1528		
L4	200		
Lb	1400		
w	520		
wb	420		
ws	470		

Customer

Supplier

Company name  
Editor  
Phone number  
E-mail

**motor data**



Symbol	No load	25 %	50 %	75 %	100 %	125 %
P <sub>2</sub> / kW	0	7.5	15	22.5	30	
P <sub>1</sub> / kW		11.82	16.16	24.12	32.15	
η / %	0	63.43	92.8	93.3	93.3	

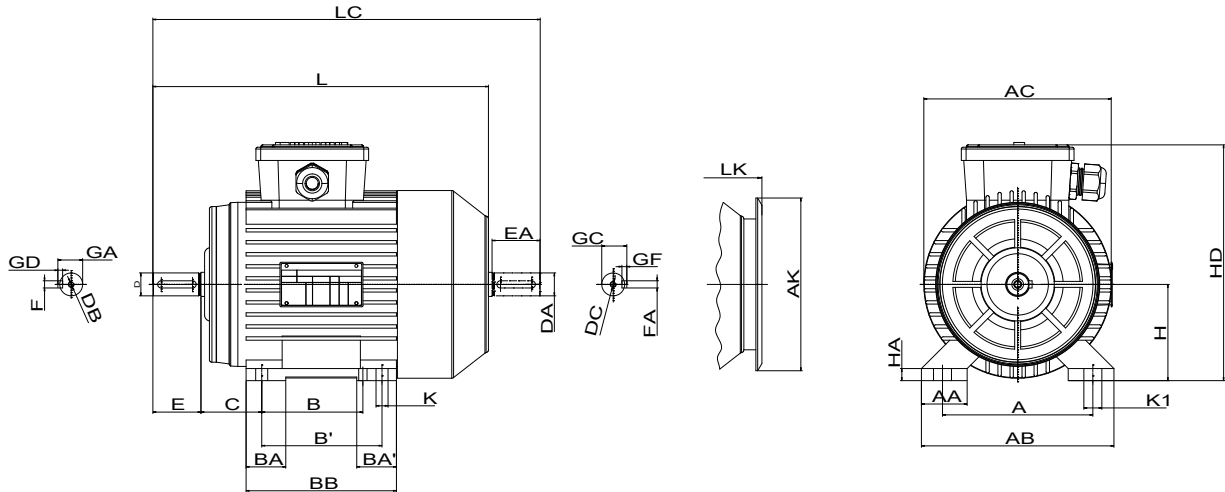
**Motor**

Make/Type	30 KW-2900 RPM / 200L	Degree of protection	IP 55
Specific design	IE3 / 50 Hz / Pole pairs 1	Type of protection	
Rated power	30 kW	Explosion protection	
Electric voltage	3~ 400 V	Service factor	1.15
Number of poles	2	Starting current	
Speed	2970 rpm	Starting torque	
Electric current	52 A	Moment of inertia	
Power factor	0.89	No. starts per hour	
Frame size	200L	Rated torque	96.5 Nm
Efficiency class	IE3	Insulation class	F (155C°)

Customer

Supplier

Company name  
Editor  
Phone number  
E-mail

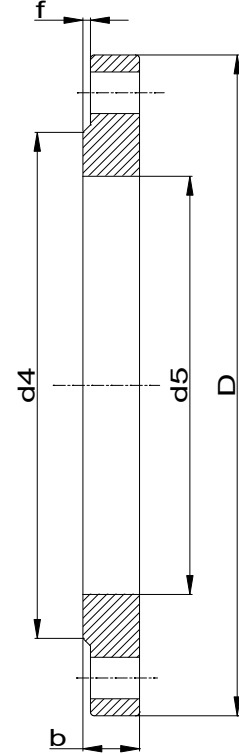
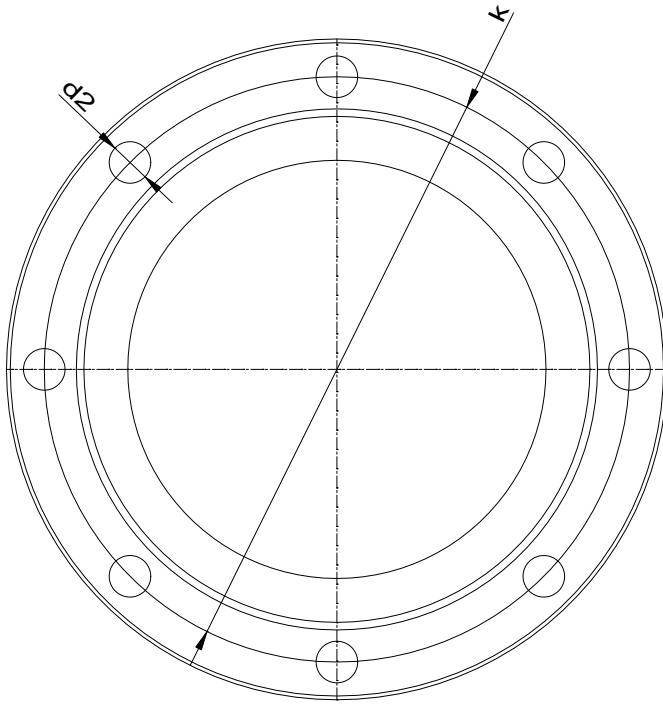


Dimensions	mm		
A	318	E	110
AA	80	EA	110
AB	396	FxGF	16X10
AC	390	FxGD	16X10
AK	370	GA	59
B	305	GC	59
B'	-	H	200
BA	68	HA	26
BA'	-	HD	477
BB	355	K	19
C	133	L	747
D	55	LC	865
DA	55	LK	803
DB	M20		
DC	M20		

Customer

Supplier

Company name  
Editor  
Phone number  
E-mail



**Suction connection**

DN100  
PN25

**Discharge connection**

DN65  
PN40

Dimensions	mm
b	26
D	235
d2	22
d4	162
d5	116
DN	100
f	2
k	190
n	8

Dimensions	mm
b	22
D	185
d2	18
d4	122
d5	77.5
DN	65
f	2
k	145
n	8





**Spare part list**  
OMK 65/ 2

Revision number

Page  
9

Company name  
Editor  
Phone number  
E-mail

**Customer**

**Supplier**

**Subject to change**

Projec

Issue date  
2022-08-08

Last update  
2022-08-08



**Spare part list**  
OMK 65/ 2

Revision number

Page  
10

Company name  
Editor  
Phone number  
E-mail

**Customer**

**Supplier**

**Subject to change**

Projec

Issue date  
2022-08-08

Last update  
2022-08-08