

Customer

Supplier

Company name
Editor
Phone number
E-mail

Fields of Application

Water supply systems.
Booster sets in high rise buildings and industry.
Water treatment.
Industrial washdown systems.
Fire extinguishing plants.
Boiler feed and condensate transfer.
Sanitary and cleaning installations.
For industrial applications and public services.
Water distribution services.
Industrial applications.
Shipbuilding, mining, power stations, filter units.
Irrigation plants.
Central heating systems.

**Design Specification**

The OMK Pump is a horizontal axis, radially split, ring section design multistage centrifugal pump of non-self priming type.

Impellers are between bearings, single entry, closed type and dynamically balanced. Impeller diameter will be corrected for optimal adherence to the required duty point.

The axial thrust is relieved by relieving boreholes in each impeller. The remaining thrust can be borne by large-sized bearings.

Pumps with exchangeable wear rings are available upon request.

The pump series consists of 5 sizes. OMK 32, 40, 50, 65 and 80. Stages are from 2 up to max. 14 stages.

Pump and motor are fitted on a common base plate and connected to each other via flexible coupling.

Normally, discharge part is at motor side on top, suction part is at dead end side on the right and rotation of direction is clockwise when viewed from driver.

Suction and discharge nozzles may be a choice of three 90° positions. By special request, it is possible to put the suction nozzle at the motor side. In this arrangement pump and motor rotation must be counter clockwise.

Technical Data

Suction Flanges	: DN50 - DN125 (PN25)
Discharge Flanges	: DN32 - DN80 (PN40)
Operating Pressure	: 40 bar
Flow Range	: 5 - 220 m ³ /h
Head Range	: 30 - 400 m
Temperature Range	: Up to 140 °C
Speed Range	: 1450 - 3600 rpm

OMK 65/ 3
Customer
Supplier

Company name
Editor
Phone number
E-mail

Operating data specification

Pumped fluid	Water	Rated flow	60	m ³ /h
Solids		Rated head	185	m
Kind		Geodetic head	0	m
Percentage of solid content	0	Available system NPSH		m
pH value		Inlet pressure (pin)	0	kPa
Temperature	20	Altitude above sea level	100	m
Density	998.3	Max. operating pressure	2070	kPa
Kin. viscosity	1.005	Max. diff. pressure	2070	kPa
Vapour pressure	2.34			

Pump

Make	MAS DAF	Impeller type		
Pump type	OMK 65/ 3	Impeller construction		
Frame size		Impeller Ø		
Design		Max.	215	mm
Self priming	<input checked="" type="checkbox"/> No	designed	213	mm
Speed	2975	rpm	Min.	175
Stages	3	Flow		
Suction port		Nominal	82.2	m ³ /h
Pressure rating	PN25	Max.	110	m ³ /h
Nominal pipe size	DN100	Min.	0	m ³ /h
Standard	DIN	Head		
Discharge port		Nominal	164	m
Pressure rating	PN40	Min.	122	m
Nominal pipe size	DN65	Max.	211	m
Standard	DIN	Shut off head	211	m
Shaft power	45.4	kW	NPSH3	1.75
Shaft power P2(Q=max.)	57.1	kW	Efficiency	66.6

Motor

Make/Type	55 KW-2900 RPM / 250M
Specific design	IE3 / 50 Hz / Pole pairs 1
Rated power	55 kW
Electric voltage	3~ 400 V
Speed	2980 rpm
Electric current	92 A
Frame size	250M
Degree of protection	IP 55
Type of protection	
Explosion protection	

Coupling

Make/Type	
Series	
Spacer length	mm
Frame size	

Materials

Pump		Shaft seal	Soft Packing
Pump Casing	GJL-250 (GG25)	Material code	
Impeller	GJL-250 (GG25)		
Shaft	A 276 Type 420 (X20Cr13)		
Bearing Housing	GJL-250 (GG25)		

Customer

Supplier

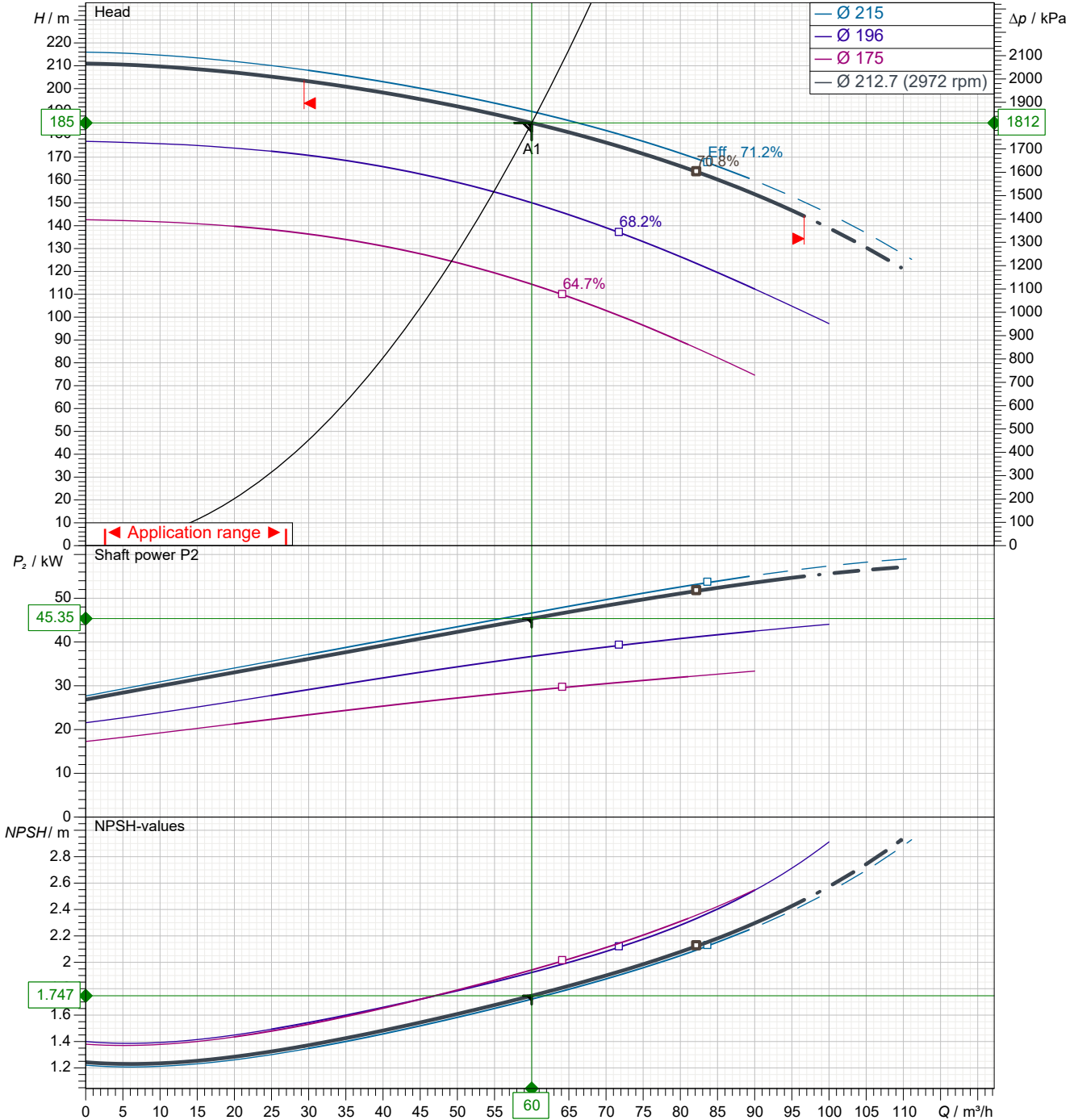
 Company name
 Editor
 Phone number
 E-mail

Power data referred to:

 Water; 20°C; 998.3kg/m³; 1.005mm²/s

Sense of rotation

Clockwise from the drive end



Pump curves in accordance with ISO 9906 2B

Pumped fluid	Water		Rated flow	60	m ³ /h
Temperature	20	°C	Rated head	185	m
Density	998.3	kg/m ³	Shaft power	45.4	kW
Kin. viscosity	1.005	mm ² /s	Speed	2975	rpm
Vapour pressure	2.34	kPa	NPSH3	1.75	m
Impeller \varnothing	213	mm	Efficiency	66.6	%

Subject to change

Projec

 Issue date
2023-07-29

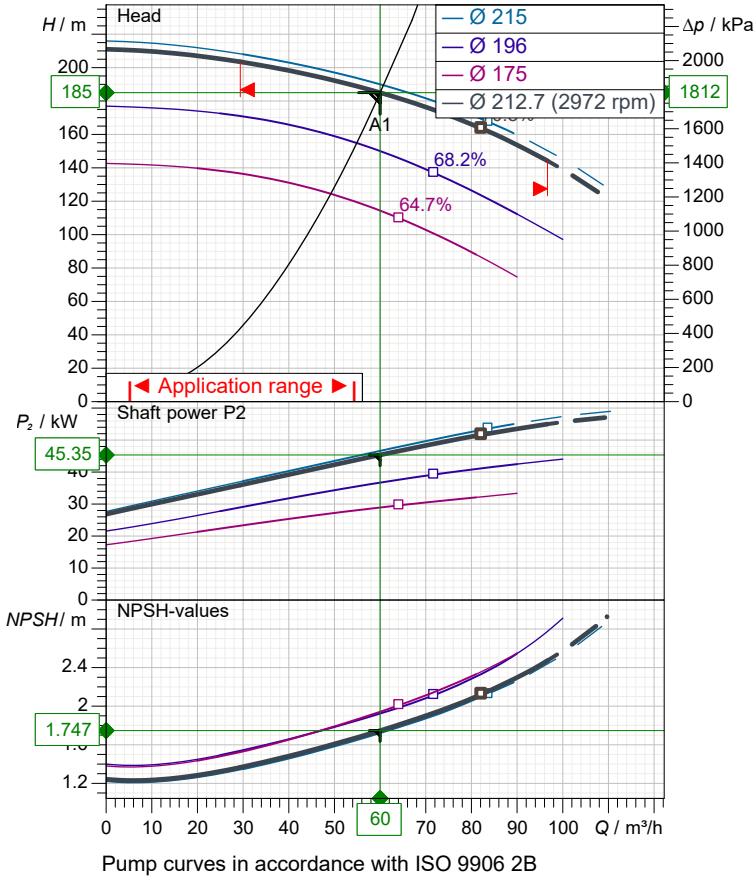
 Last update
2023-07-29

Customer

Supplier

Company name
Editor
Phone number
E-mail

Performance curves



Pump

Make	MAS DAF
Pump type	OMK 65/ 3
Design	
Suction port	
Pressure rating	PN25
Nominal pipe size	DN100
Standard	DIN
Discharge port	
Pressure rating	PN40
Nominal pipe size	DN65
Standard	DIN

Operating data specification

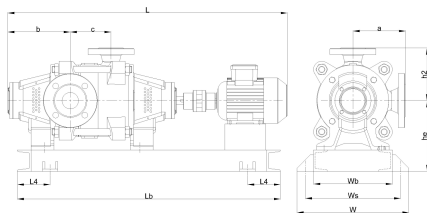
Pumped fluid	Water	
Temperature	20	°C
Density	998.3	kg/m ³
Kin. viscosity	1.005	mm ² /s
Vapour pressure	2.34	kPa
Rated flow	60	m ³ /h
Rated head	185	m
Shaft power	45.4	kW
Speed	2975	rpm
NPSH3	1.75	m
Efficiency	66.6	%
Impeller Ø	213	mm

Motor

Make/Type	55 KW-2900 RPM / 250M
Specific design	IE3 / 50 Hz / Pole pairs 1
Rated power	55 kW
Speed	2980 rpm
Electric voltage	3~ 400 V
Electric current	92 A
Degree of protection	IP 55

Materials

Shaft seal	Soft Packing
Material code	



Dimensions

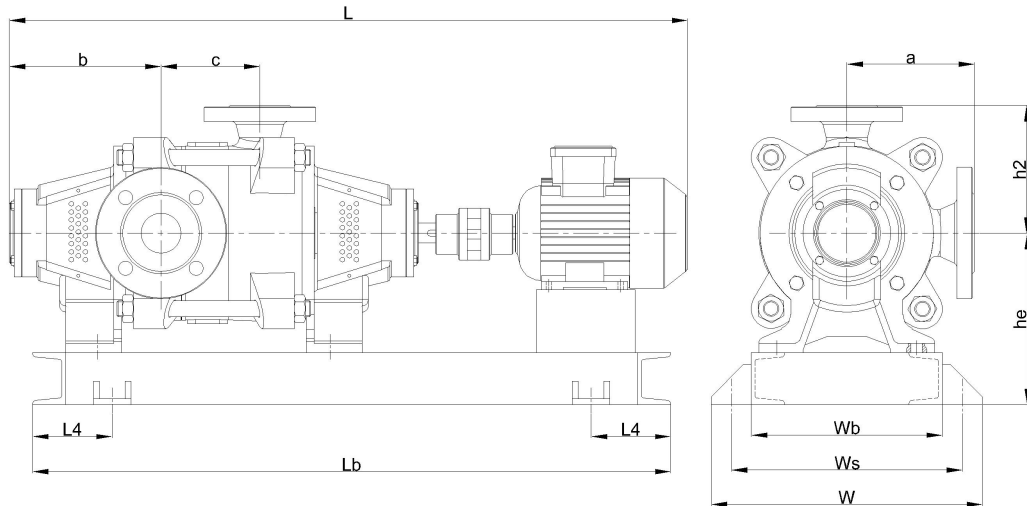
	mm
a	240
b	232
c	278
h2	240
he	420
L	1835
L4	300
Lb	1650
w	720
wb	600
ws	660

Pump Casing	GJL-250 (GG25)
Impeller	GJL-250 (GG25)
Shaft	A 276 Type 420 (X20Cr13)
Bearing Housing	GJL-250 (GG25)

Customer

Supplier

Company name
Editor
Phone number
E-mail



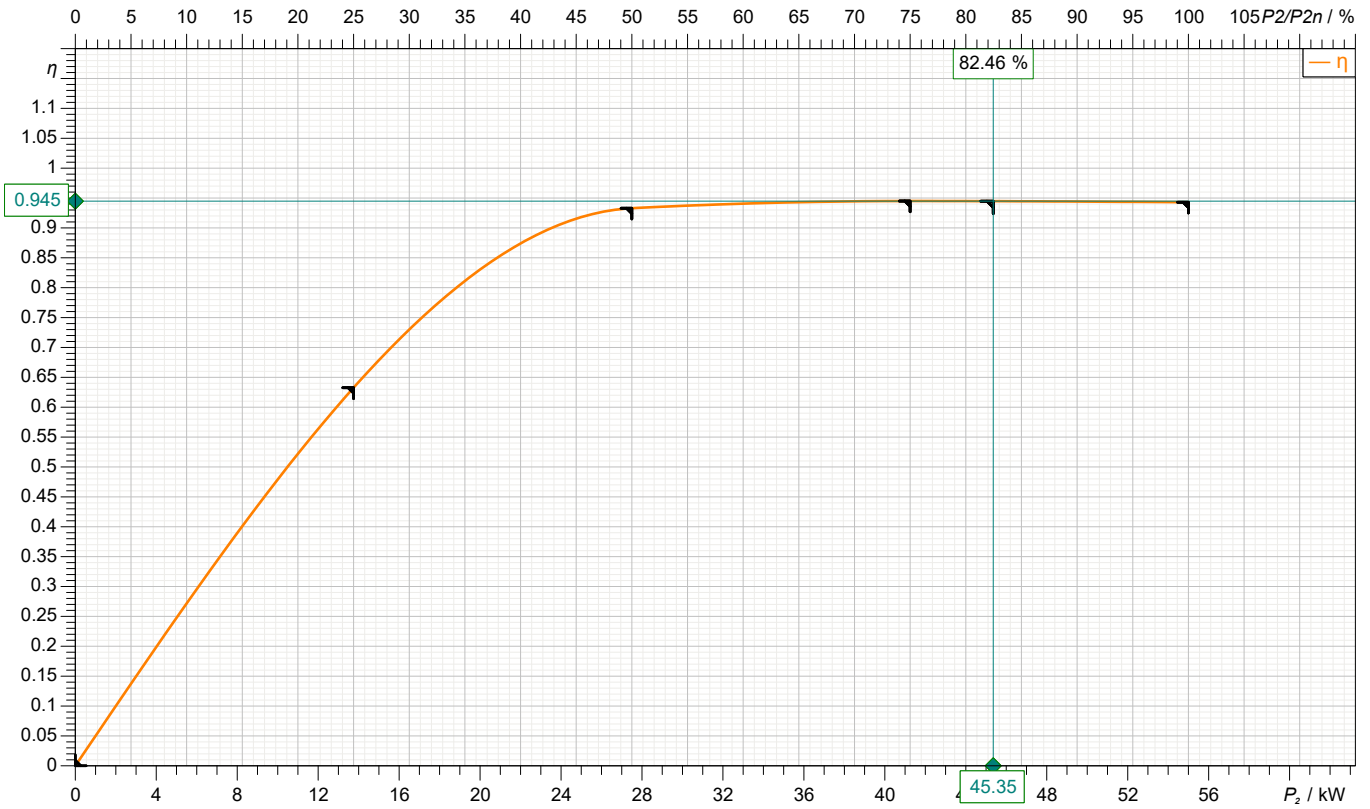
Dimensions	mm	Inlet / outlet	
a	240	Suction port	Discharge port
b	232	DN100	DN65
c	278	PN25	PN40
h2	240		
he	420		
L	1835		
L4	300		
Lb	1650		
w	720		
wb	600		
ws	660		

Customer

Supplier

Company name
Editor
Phone number
E-mail

motor data



Symbol	No load	25 %	50 %	75 %	100 %	125 %
P_2 / kW	0	13.75	27.5	41.25	55	
P_1 / kW		21.73	29.47	43.65	58.32	
η / %	0	63.27	93.3	94.5	94.3	

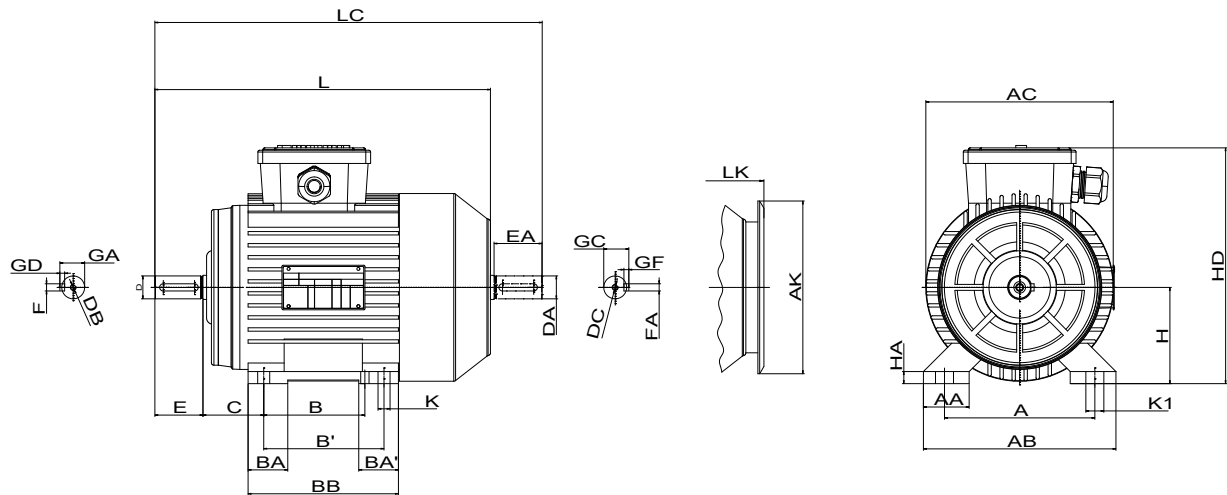
Motor

Make/Type	55 KW-2900 RPM / 250M	Degree of protection	IP 55
Specific design	IE3 / 50 Hz / Pole pairs 1	Type of protection	
Rated power	55 kW	Explosion protection	
Electric voltage	3~ 400 V	Service factor	1.15
Number of poles	2	Starting current	
Speed	2980 rpm	Starting torque	
Electric current	92 A	Moment of inertia	
Power factor	0.92	No. starts per hour	
Frame size	250M	Rated torque	176 Nm
Efficiency class	IE3	Insulation class	F (155C°)

Customer

Supplier

Company name
Editor
Phone number
E-mail

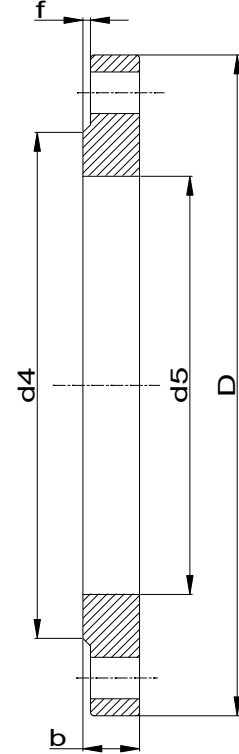
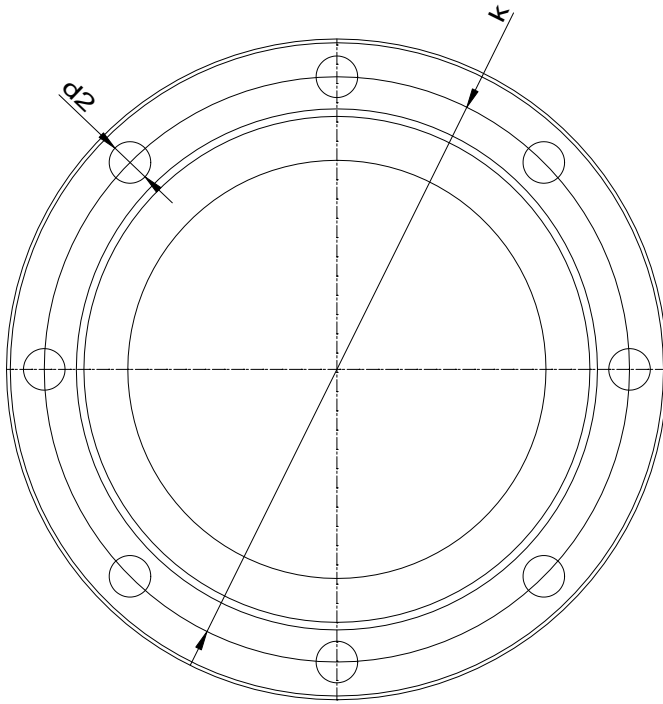


Dimensions	mm		
A	406	E	140
AA	80	EA	140
AB	484	FxGF	18X11
AC	480	FxGD	18X11
AK	440	GA	69
B	349	GC	69
B'	-	H	250
BA	75	HA	35
BA'	-	HD	572
BB	410	K	24
C	168	L	896
D	65	LC	1044
DA	65	LK	952
DB	M20		
DC	M20		

Customer

Supplier

Company name
Editor
Phone number
E-mail



Suction connection

DN100
PN25

Discharge connection

DN65
PN40

Dimensions	mm
b	26
D	235
d2	22
d4	162
d5	116
DN	100
f	2
k	190
n	8

Dimensions	mm
b	22
D	185
d2	18
d4	122
d5	77.5
DN	65
f	2
k	145
n	8



Spare part list
OMK 65/ 3

Revision number

Page
9

Company name
Editor
Phone number
E-mail

Customer

Supplier

Subject to change

Projec

Issue date
2023-07-29

Last update
2023-07-29



Spare part list
OMK 65/ 3

Revision number

Page
10

Company name
Editor
Phone number
E-mail

Customer

Supplier

Subject to change

Projec

Issue date
2023-07-29

Last update
2023-07-29